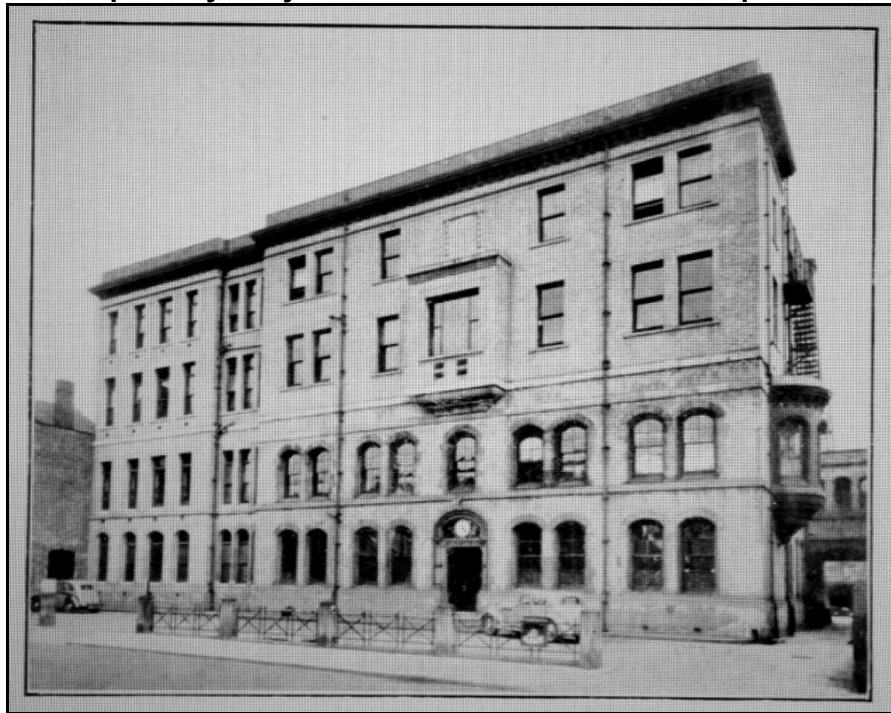


*LOCAL FUND RAISING EVENTS FOR
LOUGHBOROUGH GENERAL HOSPITAL
1931 TO 1939*



Loughborough Public Dispensary early 1900 – Core of the General Hospital below



Loughborough General Hospital in 1938

BY SAMUEL T STEWART - DECEMBER 2020



Loughborough General Hospital from the rear awaiting demolition

A BRIEF HISTORY OF LOUGHBOROUGH GENERAL HOSPITAL

A public dispensary in Baxter gate was established in 1819. It was rebuilt in 1862 of white brick and still described as a public dispensary. This formed the core for the future Loughborough and General Hospital. It had only 24 beds at this time. It was subsequently enlarged in 1888 and further enlarged in 1896. The King Edward VII memorial ward for children was built and presented in 1911. The hospital was closed in 2003 for financial reasons, and demolished in 2012. It sadly became an eyesore in the town during this period.

© **Samuel T Stewart** – December 2020

All rights reserved. No part of this publication may be reproduced, stored in a retrieval system or transmitted in any form or by means, electronic, mechanical or otherwise without first seeking the written permission of the author.

Unless stated otherwise, all photographs are copyright of the originator.

LOCAL FUND RAISING FOR LOUGHBOROUGH GENERAL HOSPITAL

In 1933, Loughborough General Hospital started an official scheme to try and raise money for new facilities at the hospital, and through the efforts and generosity of numerous people and organisations, the accounts show that by the year ending 1940, no less than £34, 848. 2s. 10d. had been raised.

Research information is extremely limited, but it is hoped that the reader will find what has been recorded of interest, and the numerous names mentioned in the text and in connection with the appended iconic photograph will hopefully be of interest to their descendants also.

Prior to the official scheme being inaugurated, the following three transcribed newspaper articles show that Griffydam was already organizing events to raise funds for the hospital, and in 1934, a substantial amount of £133 was recorded as being raised at a fete held there. Unfortunately, no hospital accounts information is available for years 1931 to 1934.

RECORDED IN HOSPITAL ACCOUNTS

DATE	GRIFFYDAM	NEWBOLD AND DISTRICT HOSPITAL SOCIETY	NEW LOUNT COLLIERY EMPLOYEES
1931	Not known		
1932	Not known		
1933	Not known		
1934	£133		
1935		£66	£187 17s. 3d
1936		£75	
1937		£95	
1938		£100	
1939			
1940			£209 9s. 8d.

Leicester Evening Mail – August 24th 1931

GRIFFIDAM'S EFFORT FOR CHARITY

The people of Griffydam and district, near Coalville, on Saturday made their annual effort for the funds of the Loughborough Hospital. This took the form of a fete and flower show in a field near the Waggon and Horses Inn, owned by Mr. George Kilby.

The opening ceremony was performed by Mrs. W. Taylor, of Ashby. There was a good exhibition of flowers, fruit and vegetables, and the attractions included various competitions. The proceedings were enlivened by selections by the Hugglescote and Ellistown Silver Prize Band. All the proceeds will be given to the hospital.

The results of the children's races were as follows:-

Girls, 6 to 8 years : 1, Peggy Smith, 2. Rose Robey.

Girls, 9 to 11 years : 1. Gwen Darby, 2. Lena Dawkins.

Girls, 12 to 14 years : 1. Phyllis Davies, 2. Lena Webster.

Boys, 9 to 11 years : 1. R. Fredson, 2. E. Francis.

Boys, 12 to 14 years : 1. S. Clamp, 2. M. Wilton.

Leicester Evening Mail – August 22nd 1932

**SIX-A-SIDE FOOTBALL
FEATURE AT OSGATHORPE FETE**

Griffydam and district made its annual effort for the Loughborough Hospital on Saturday, when a fete was held in Mr. T. Tivey's field at Osgathorpe.

The opening ceremony was performed by Mrs. Taylor of Ashby, who was supported by a number of influential people, including the Mayor and Mayoress of Loughborough.

Snibston Colliery Band played selections, and amongst the attractions were various competitions, including a six a side football contest for schoolboys.

In the final, Snibston School defeated Griffydam by three goals to one. Joe Bradford, the Birmingham and International footballer, refereed and presented the cup and medals.

Prizes were offered for onions, the winners being Messrs. A. Hartshorn (Barrow-on-Soar), C. Brewin (Loughborough) and T. Clifford (Sawley).

In the evening there was a carnival dance in the Osgathorpe school.

Leicester Evening Mail – September 17th 1934

**GRIFFYDAM'S ANNUAL FETE
£133 FOR HOSPITAL**

Griffydam and district people held their fourth annual effort for Loughborough Hospital on Saturday, when the fete was opened by Mrs. Welch, of Loughborough.

Mr. J. Pargeter presided at the opening ceremony, and was supported by Mr. and Mrs. F. C. Welch, Loughborough, and Mr. H. Pickering, Swannington.

Mr. Welch who is secretary of Loughborough Hospital, said that the expenses of the hospital were double what they were four or five years ago.

He was delighted to hear that Griffydam's efforts for the hospital had realized £133.

Mr. G. Martin is the Chairman of the committee; Mr. George Wilton secretary and Mrs. G. Killey treasurer.

Committee members were: Messrs. F. Francis, S. Driver, J. Horne, T. Hodges, C. Platts, F. Martin and D. Robey

NEWBOLD AND DISTRICT HOSPITAL SOCIETY

As a result of a decision by Worthington to hold their own celebrations to commemorate the Silver Jubilee of King George V and Her Majesty Queen Mary, it appears from the following transcribed newspaper report that Newbold, Griffydam, Gelsmoor and Pegg's Green came together to organize their own event on the New Lount Colliery Athletics Ground. The author believes that it was out of this successful joint effort that the "Newbold and District Hospital Society" was formed confirmed by the fact that £66 was donated to Loughborough hospital in 1935. The newspaper reports state that Loughborough, Derby, Leicester and Ashby de la Zouch would benefit from the profits. A total of £1,150 was donated over 4 years from 1935 to 1939.

New Lount Colliery employees also donated £187 to Loughborough in that year and the 1940 accounts record that £209 was donated.

Leicester Evening Mail – April 5th 1935

**JOINT JUBILEE
NEWBOLD, GRIFFYDAM AND GELSMOOR**

Owing to the Worthington village having decided to have their own Jubilee celebrations, Newbold, Griffydam, Pegg's Green and Gelsmoor have had to amalgamate, and in this connection meetings have recently been held.

It has been decided to call in all the people in the three villages to a free meat tea. The children under 14 years of age will be presented with a Jubilee china cup and saucer.

Proceedings will open on Jubilee Day at 1p.m. with a service in the New Lount Colliery athletic field and children's sports will commence. There will be a tea for the children in the Newbold Schools and afterwards the children will be entertained to a picture show at the New Hall, Newbold, kindly loaned by Mr. E. Martin.

Tea for the elderly people will follow the children's tea. There will be sports for the adults and a dance.

The committee would welcome offers to help at the tea. Names should be given in at the general committee meeting, held every Tuesday night at seven o'clock in the New Hall, Newbold.

Leicester Evening Mail – July 22nd 1935

VILLAGERS HELP THE HOSPITALS

The hospitals of Derby, Leicester, Loughborough are to benefit by a fete on Saturday on the New Lount Colliery Sports Ground at Newbold ([Gelsmoor](#))

It was the first annual effort to be organized by the villages of Newbold, Griffydam, Gelsmoor and Peggs Green. Mr. Frank Hodges, the managing director of the Leicestershire Colliery & Pipe Co., performed the opening ceremony, and Mr. J. G. Pickard said the Leicester Royal Infirmary would receive its 10,000th in-patient this year.

A fancy dress parade was headed by the Ibstock United Silver Prize Band and the Shardlow Jazz Band also took part in the parade of the district. A horticultural show, football match and ox-roasting were included in the programme.

THE INTRODUCTION OF OX-ROASTING AT THE ANNUAL FETES

Leicester Evening Mail – June 27th 1938

NEWBOLD'S GOLDEN OX

Newbold and District Hospital's Committee claim a national record for the amount of money raised for the first slice of a roasted ox. When their fete for Leicester, Derby, Loughborough and Ashby Hospitals was held on Saturday, the first slice realized £161 10s. 6d.

Over 2,500 people attended and the record of last year, £315, is believed to have been broken.

A feature was the crowning of the beauty queen, Miss Gwen Warrington, of Griffydam, by Mrs. Frank Hodges.

The parade prize-winners were Mrs. Kidger, Miss Adcock, Mrs. Bomlroff, Miss Freda Griffin, Kenneth Springthorpe and G. Townsend.

Mrs. Hodges, who opened the fete, started the bidding for the first slice of the ox by offering £10 10s.

Griffydam (13 for three) beat Newbold (11 all out) for the Griffydam and District

Charity Cricket Cup. Newbold Social Club won the tug-of-war. In the evening, dances were held. Mr. Edward Martin is chairman of the committee; Mr. Idwal Taylor, hon. Secretary; and Mr. J. B. Mackie, hon. treasurer

Leicester Evening Mail – June 12th 1939

NEWBOLD BEAUTY QUEEN

A 16 year old brunette, Miss Caroline Knight, daughter of Mr. and Mrs. J. Knight, of Griffydam was on Saturday night chosen by Mr. and Mrs. H. T. Plowman as the beauty queen for the Newbold and District hospital fete which takes place on the New Lount Colliery Athletic Ground on July 1st. The selection was made at a dance at Newbold. The queen's six small attendants will be Misses Joyce Carter, Nina Rogers, Susanne McNeish and Maureen Richards, of Newbold, and Lorna May Ashbridge and Freda Wilton, of Pegg's Green.

Leicester Evening Mail – July 1st 1939

"QUEEN" CROWNED AT NEWBOLD HOSPITAL FETE

The big event of the summer for the villagers of Newbold, Griffydam, Pegg's Green and Gelsmoor, took place on the New Lount Colliery Athletic ground today, when Miss Caroline Knight, of Griffydam, was crowned queen of Newbold Hospital fete. This is usually one of the most successful village efforts in the county. In the last four years, the Newbold and District Hospitals' Society has contributed £1,150 to the four hospitals which serve the district (Loughborough, Ashby, Derby and Leicester). The contribution from last years effort was £350.



The Ox was roasted over hot coals, whilst being rotated on a shaft in bearings at either end. To one end, was attached a cart-wheel, which was rotated in turns by the public and children, no doubt for a fee. It is hoped that older readers will be able to identify the people in the photograph, as this has not been possible to date. The young boy on the right with the cap, is thought to be Herbert Hodges, and the older boy Ron Bancroft. The person with them wearing the cap is possibly Ron Hodges.

It was thought that the Ox was supplied by Kidger's Butchers, who ran the business in School Lane. Mrs. Kidger is actually the lady basting the Ox. On her left is Violet Hodges who lived in Providence Chapel house, and the lady right at the back is Bertha Richards, who was the wife of Jim Richards the baker from School Lane.

One of the highlights of the "Ox Roast" was the auctioning off of the first slice of beef. This went for £202 in 1939 which was a lot of money at that time, and the person who paid this must have been quite a wealthy benefactor. It is said that everyone received a free slice of beef in their cob also.

**THIS WOULD HAVE BEEN THE LAST EVENT HELD DUE TO THE
INTERVENTION OF THE SECOND WORLD WAR**

EXTRACTS FROM SURVIVING HOSPITAL ACCOUNTS

Entertainments			
	£	s.	d.
Belton Young Men's Club—Proceeds of Billiards	0	16	0
Clarion Cycling Club—Proceeds of Dance	1	0	0
Concert by Jean Cope and Ann Pearson	0	12	6
Concert at The Kolyers, Forest Road	0	5	0
Conservative Club—Snooker Tournament	0	10	0
Kegworth Fete—Part Proceeds	19	19	2
Longcliffe Hotel Charity Committee—Proceeds of Two Whist Drives and Dances	4	0	0
Loughborough Bakers—Proceeds of Dance	3	15	0
Loughborough Choral Society—Part Proceeds	5	5	0
Loughborough Fruit Traders—Proceeds of Dance	3	10	0
Loughborough Grocers—Proceeds of Ball	10	0	0
Loughborough Table Skittle League Tournament	3	0	0
Loughborough Whist League	15	15	0
Newbold Gelsmoo and District—Part Proceeds of Fete	66	0	0
Oaks in Charnwood—Proceeds of Dance	4	9	0
Quorn Manor House Hotel Skittle Tournament	1	16	0
Quorn Manor Hotel—Proceeds of Whist Drives	14	0	0
Quorn Baptist Choir Cantata	2	7	0
Quorn Wakes Sunday Concert	3	2	11
Shepshed Foresters Arms—Proceeds of Flower Show	16	0	0
Shepshed Private School—Proceeds of Concert	0	15	0
Six Hills Social—per Miss N. Wartnaby	3	5	0
Stanton, Mr., The Plough, Normanton, proceeds of Skittle Tournamen	1	16	0
Strawson, Mr. B., Proceeds of Boxing Match	5	0	0
Swannington Hospital Effort—Part Proceeds	15	2	6
Swithland Church Lawn Tennis Club—Proceeds of Whist Drive and Dance	4	2	6
Swithland—Proceeds of Whist Drive, per Mr. Simmons	4	13	0
Walton-le-Wolds Whist Drive proceeds, per Mrs. Hallam	7	0	0
Woodhouse Eaves Allotment Association—Proceeds of Whist Drive and Dance	3	9	0
Woodhouse Eaves Cricket Club—Proceeds of Match	2	4	6
Woodhouse Eaves Jubilee Tennis Club—Proceeds of Whist Drive and Dance	7	0	0
<hr/>			
£230			16 1

1935

Entertainments and Special Efforts.						
1425	1	0	Carnival Committee	360	4	10
173	10	0	Kegworth Hospital Association	133	0	0
257	10	2	Loughborough College Effort (part)	262	2	5
100	0	0	Loughborough Amusements	0	0	0
75	0	0	Newbold and District Hospital Society	95	0	0
66	0	0	Loughborough Fair Extension	75	11	9
105	14	5	Other Entertainments (see page 29)	148	13	1
2202	15	7		<hr/>		1074 12 1

1936 ON THE LEFT AND 1937 ON THE RIGHT

1937.		INCOME.		£	s.	d.	£	s.	d.
656	10	0	Annual Subscriptions		714	10	6
4950	0	0	Contributory Fund		5200	0	0
407	16	9	Other employees contributions		415	18	4
Beds and Cots Maintenance.									
50	0	0	Loughborough College	0	0	0	
50	0	0	Loughborough Bowlers	50	0	0	
50	0	0	Loughborough Amateur Operatic Society	50	0	0	
30	0	0	Loughborough Girls' High School	30	0	0	
30	0	0	Loughborough Boys' Grammar Schl.	30	0	0	
26	11	6	Loughborough Ladies' Sports Clubs	27	8	6	
40	0	0	Loughborough & District Cricketers	0	0	0	
25	0	0	Loughborough Primary Schools (3 years)	75	0	0	
301	11	6					262	8	6
Donations.									
250	17	1	Ordinary Donations	331	14	2	
34	7	6	Collecting Boxes	30	7	8	
127	7	9	Congregational Collections	135	5	11	
412	12	4					497	7	9
Entertainments and Special Efforts.									
360	4	10	Carnival Committee	1302	19	4	
133	0	0	Kegworth Hospital Association	150	0	0	
262	2	5	Loughborough College "Rag"	270	5	6	
75	11	9	Loughborough Fair Extension	0	0	0	
95	0	0	Newbold & District Hospital Society	100	0	0	
0	0	0	Leicestershire District Miners' Welfare Committee	300	0	0	
0	0	0	Shepshed Fete	80	0	0	
148	13	1	Other Entertainments	214	15	1	
1074	12	1					2417	19	11
Property.									
705	7	5	Dividends on Investmts.	665	5	8			
			Dividends Leics. Miners' Welfare Endowment	33	10	9			
							698	16	5
188	3	6	Reclaimed Tax	230	10	7	

1937 ON THE LEFT AND 1938 ON THE RIGHT

Entertainments and Special Efforts

	£	s.	d.
Burton-on-the-Wolds Carol Singers	0	10	0
Commercial Travellers' Association—Proceeds of Dance	17	6	1
Copt Oak Inn—Proceeds of Whist Drive	5	0	0
East Leake—Proceeds of Dance, per Miss Lunt	5	0	0
Gotham Parish Church—Garden Fete	8	11	2
Hartopp, J. A.—Proceeds of Whist Drives at the Manor Hotel, Quorn	27	0	0
Hartopp, J. A.—Proceeds of Cricket Cup Competition	6	0	0
Kegworth Hospital Association	133	0	0
L. Lewin—Proceeds of Dance at Barrow-on-Soar	1	0	0
Loughborough Charity Football Association	25	0	0
Loughborough Carnival Committee	360	4	10
Loughborough College (part)	262	2	5
Loughborough Liberal Club Flower Show	1	1	0
Loughborough Pleasure Fair Extension	75	11	9
Loughborough Whist League Cup	15	15	0
Loughborough Women's Adult School—Proceeds of Whist Drive	0	15	0
• Newbold and District Hospital Society	95	0	0
Normanton-on-Soar—Proceeds of Darts and Skittle Competition at The Plough	2	0	3
Oaks Church—Proceeds of Dance	4	4	7
Shepshed Foresters Arms Flower Show	20	0	0
• Swannington Annual Effort	9	10	0
<hr/>			
£1,074 12 1			

1937

(Note Swannington Annual Effort)

Entertainments and Special Efforts

	£	s.	d.
Briggs, Mrs., Stanford, Proceeds of Dance	5	12	6
"Cherry Tree Inn", Flower Show	1	10	0
Copt Oak, part effort	5	0	0
Harding, Miss, Proceeds of Dance	27	14	11
Hartopp, J. A., Proceeds of Cricket Cup Competition	10	0	0
Kegworth Hospitals Association	150	0	0
"King William Fourth", Dart Competition	0	3	6
Leicestershire District Miners' Welfare Committee	300	0	0
Leicester Farmers' Discussion Society, Proceeds of Dance	3	3	0
Loughborough College, Balance 1937 "Rag"	33	13	0
Loughborough College, 1938 "Rag"	270	5	6
Loughborough Competitive Musical Festival	5	0	0
Loughborough Carnival Committee	1302	19	4
Loughborough and District Football Association	25	0	0
Loughborough Junior College, Proceeds of Concert	1	18	8
Loughborough Whist League	15	15	0
Newbold & District Hospital Society	100	0	0
Oaks Church, Proceeds of Dance	2	4	10
Odeon Theatres Ltd.	8	15	4
Quorn Cricket Club, Proceeds of Whist Drive and Dance	12	9	3
Quorn Parish Church, Dance	7	0	0
Quorn Parish Council, Concert	3	11	7
Shepshed Fete	80	0	0
Shepshed Foresters Arms, Proceeds of Show	20	2	0
Stanton, Mr., Proceeds of Skittles and Darts at "The Plough"	3	1	6
Swannington Hospital Effort	5	0	0
Whitwick British Legion, Proceeds of Pantomime	18	0	0
<hr/>			
£2417 19 11			

1938

(Note Swannington Hospital Effort)

NEW LOUNT COLLIERY EMPLOYEES CONTRIBUTION

Contributions from Employees Not Members of the Contributory Fund.						£	s.	d.
Forest Rock Granite Co., Whitwick..	12	5	0
Gotham Gypsum Mines	10	0	0
Gotham Mines	14	0	0
Leicestershire County Council	6	3	6
Mountsorrel Granite Boot Co. Ltd.	5	0	0
● New Lount Colliery	187	17	3 ●
Seal, H. and Co., Whitwick	37	10	0
Shepherd, J. W., Gotham	11	0	0
South Leicestershire Colliery	20	0	0
Whitwick Colliery Co. Ltd.	108	13	6
Whitwick Granite Co. Ltd.	10	10	0
TOTAL						£422	19	3

1935

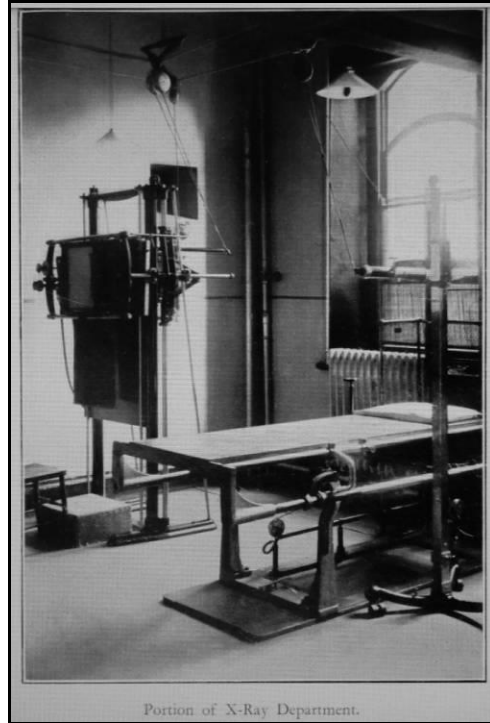
LOUGHBOROUGH GENERAL HOSPITAL PHOTOGRAPHS



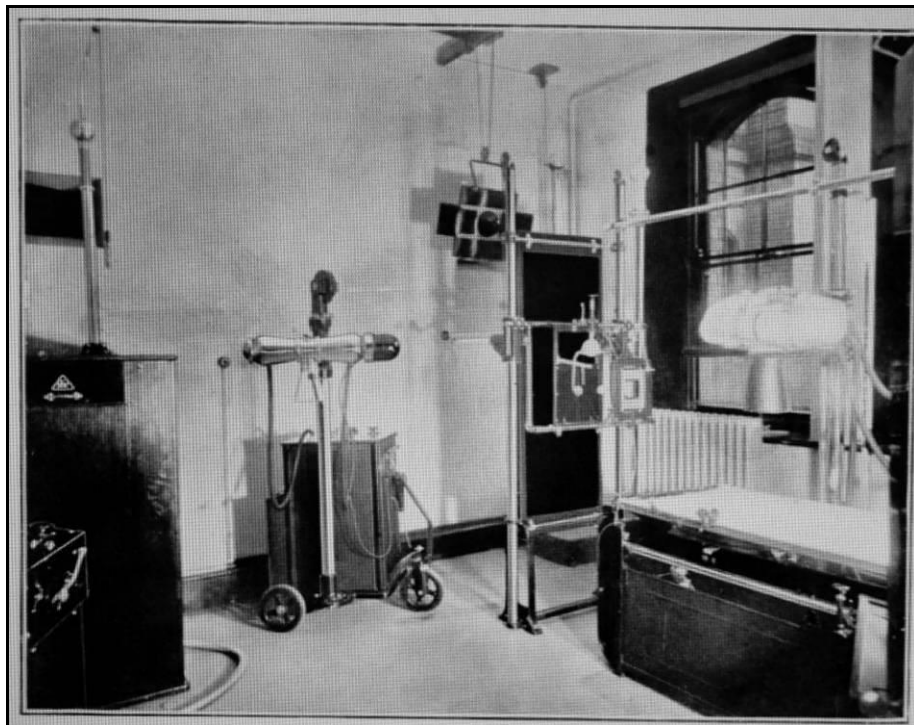
MATERNITY WARD 1937



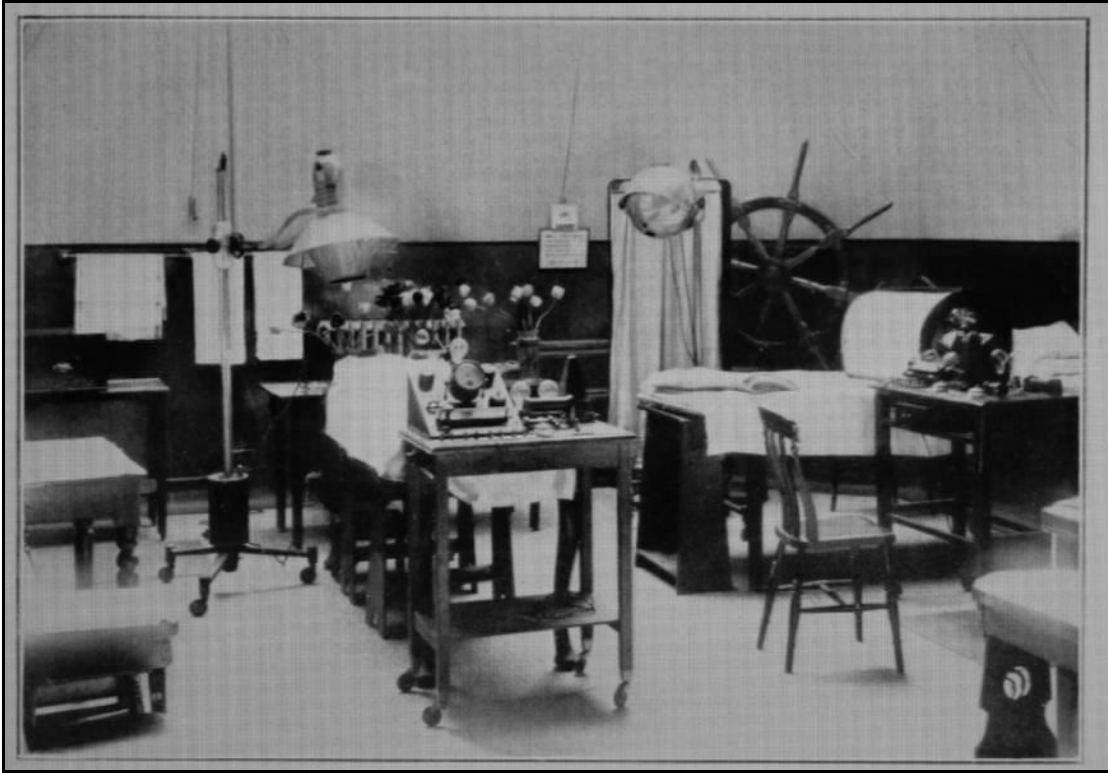
NURSING STAFF MARCH 1939



PHOTOGRAPH OF X-RAY DEP'T 1935



X-RAY DEP'T IN 1939 RE-EQUIPPED WITH ENTIRELY NEW PLANT INCLUDING MOBILE X-RAY UNIT AT A COST OF £1,600



PART OF MASSAGE DEPARTMENT - 1939