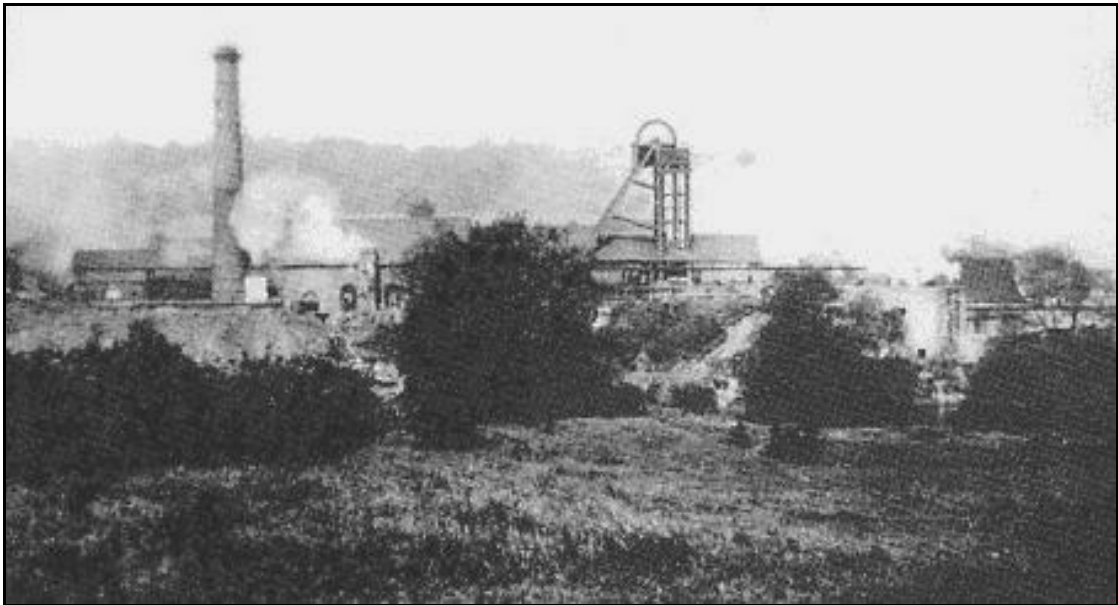


**SAMUEL MATCHETT OF
STONEY LANE COLEORTON**
A SAD FATALITY AT COLEORTON NO. 3. COLLIERY.
December 1918



BY SAMUEL T STEWART - FEBRUARY 2025
Updated April 2025

INTRODUCTION

Various branches of the Matchett families appear in the Coleorton censuses from 1861 onwards. However, the Matchetts actually originated from Osgathorpe, the first baptism recorded in the Osgathorpe parish registers being for Elizabeth the daughter of John and Mary Matchet in 1723. This particular publication focuses on Samuel Matchett who died from the serious injuries he received from an accident at the Coleorton No.3. colliery (Bug & Wink) in 1918. Samuel was born to Henry and Elizabeth Matchett and was recorded as being aged 5 months in the Coleorton 1871 census. His father Henry was a Blacksmith and was born in Osgathorpe. His wife Mary was born in Swannington. They were both buried in the same grave in St. Mary's graveyard, Coleorton. Samuel died Dec18th 1918 aged 48 and Mary Feb 27th 1944 aged 72.

For anyone who wishes to research the Matchett's of Osgathorpe and Coleorton, I have included information from the Osgathorpe Parish Registers and Bishop's Transcripts together with census information from both Osgathorpe and Coleorton, at the end of the publication. It will also be necessary to refer to the censuses for Linton, Derbyshire.

INQUEST ON THE DEATH OF SAMUEL MATCHETT

Transcribed from the Coalville Times -
Friday December 20th 1918

LOCAL NEWS

Fatal Accident at Coleorton Colliery Miner Killed by Fall of Coal

An inquest was held yesterday (Thursday) by Mr H. J. Deane at the **Blacksmith's Arms, Coleorton**, concerning the death of Samuel Matchett, collier, of **Stoney Lane, Coleorton**, who was injured whilst at work in the Coleorton Colliery on Tuesday, and died after being taken home.

Mr T. H. Bull (H.M. Inspector of Mines) and Mr A. G. Greensmith (manager of the colliery) were present, and Mr L. Lovett (agent) represented the Leicestershire Miners' Association.

Mary Matchett, ([nee. Lord](#)) the widow, said the deceased was 49 years of age, and was employed as a miner at the Coleorton Colliery, where he had worked for four or five years. His health had been good. He went to work on Tuesday morning about 6.15 and was brought home about 2.45 pm on a stretcher. He said his legs and chest were injured, and he appeared to be in great pain. He died about 3.30. The doctor (Dr. Jamie's assistant) came at ten minutes to five.

Dr. R. W. Jamie (Coalville) said he saw the body at 11.30 on Wednesday morning and found that the injuries were a dislocation of the left knee, fracture of the left thigh, a large flesh wound on the right leg, and evidence of serious abdominal injuries. Shock from the latter was the cause of death.

The Coroner remarked that the man was injured about one o'clock and was not seen by a doctor till after he had died. It was nearly five o'clock before the doctor arrived. Dr. Jamie said the messenger arrived at his house at 2.45 and said the man had a broken leg and was still in the pit. Witness's locum tenens (*to hold the place of / to substitute for*) was then on his rounds.

George Costelow, School Lane, Whitwick, said he was a chargeman at the Colliery and was working in No. 9 stall on Tuesday with deceased, who was also a chargeman. The stall had been properly examined and appeared alright, but about one o'clock the coal fell without the least warning. It burst the sprags out and knocked Matchett down. He was caught by the thighs and witness called for assistance. They liberated deceased in about five minutes. About three tons of coal fell and it came from the place where a shot-hole had been made.

George Brotherhood, loader, of Brooks' Lane, Whitwick, and George Edward Francis, undermanager, also gave evidence. Francis said he rendered first aid. They got the man out of the pit about a quarter to two. Answering the Coroner as to the means of communicating an accident at the pit, witness said they telephoned out of the pit to the office on the bank, and the office made the arrangements. A man was at once sent on a bicycle for the doctor if that was thought necessary.

The Coroner, summing up, said he thought the means of communication between the collier and the doctor ought to be improved without delay. He also wished to call the jury's attention to the fact that Dr. Robbins had been warned by P.C. Sibson (the Coroner's officer) to attend to give evidence, and had not done so. He (the Coroner) knew the great call there was upon doctors at the present time, but anyone who was called to give evidence at an inquest, and failed to do so, was liable to arrest. Excellent relations had always existed between the doctors of the district and himself, and he desired those relations to continue, but he must show them that a Coroner's jury was entitled to respect.

A verdict of "accidental death" was returned and sympathy with the widow was expressed by the Coroner and jury. Mr Greensmith and Mr Lovett, said the woman (*Mary Matchett*) had also lost two brothers by fatal colliery accidents.

Osgathorpe Parish Register and Bishop's Transcripts

Baptisms 1583 - 1888

St. Mary's Church - Osgathorpe

3rd June 1723	Elizabeth Matchet	d. of John and Mary
5th January 1726	Samuel Matchet	s. of John and Mary
6th April 1740	John Matchet	s. of John
13th April 1741	William Matchet	s. of William
30th May 1740	Will Matchet	s. of Will
8th July 1741	Thomas Hunt/Matchet	base child of Sarah Hunt & J. Matchet
24th Jan 1745	Ann Matchet	d. of Will
26th Feb 1747	Elizabeth Matchet	d. of Will
6th Jan 1749	Mary Matchet	d. of WM & Catharine
2nd Mar 1749	Mary Matchet	d. of Saml & Rebecca
15th Sept 1751	Elizabeth Matchet	d. of Samuel & Rebecca
3rd April 1761	Hannah Matchet	d. of Samuel & Rebeccah
27th July 1766	Joseph Matchet	s. of Joseph & Ann
22nd Jan 1768	Sarah Matchet	d. of Joseph and Ann
24th Mar 1769	Rose Wardle Matchet	natural d. of Mary
24th Dec 1769	Charles Matchet	s. of Joseph and Ann
21st Sep 1778	Samuel Matchet	s. of John & Elizabeth
17th Sep 1780	Elizabeth Matchet	d. of John & Elizabeth
14th June 1782	Hannah Matchet	d. of John & Elizabeth
23rd Dec 1785	John Matchet	s. of John & Elizabeth - listed as poor
28th July 1786	Jacob Johnson Matchet	base son of Hannah
23rd Mar 1787	Sarah Matchet	d. of John & Elizabeth - listed as poor
19th Dec 1788	William Matchet	s. of John & Elizabeth - Listed as poor
27th Jun 1791	Ann Matchett	d. of John & Elizabeth (note change to double t)
18th Sep 1796	Jane Matchet	d. of John & Elizabeth
3rd May 1799	Mary Matchett	d. of John & Elizabeth (note change to double t)
27th Apr 1823	James Matchett	s. of William & Elizabeth (note change to double t)
27th Apr 1823	William Matchett	s. of William & Elizabeth (Twins ??)
16th Dec 1832	John Richard Matchett	s. of William & Elizabeth (labourer)
16th Dec 1832	Sarah Catharine Matchett	d. of William & Elizabeth (labourer)
16th Dec 1832	Charlotte Matchett	s. of William & Elizabeth (labourer)
16th Dec 1832	Maria Matchett	d. of William & Elizabeth (labourer)

Note that the above 4 children were baptised on same day

5th April 1835	Joseph Matchett	s. of William & Elizabeth (potter)
9th Jun 1837	George Matchett	s. of William & Elizabeth (Potter)
9th Jun 1837	Mary Matchett	d. of Samuel & Elizabeth (labourer)
9th June 1837	Henry Matchett	s. of Samuel & Elizabeth (labourer)
The above 3 children were baptised on same day		
25th July 1880	Priscilla Mattchet Cawrah	d. of Sarah Ann
25th July 1880	Sarah Matchett / Young	d. of Edward Matchett (Miner) & Sarah Ann Young
5th Feb 1882	John Matchett / Young	s. of Edward Matchett (Miner) & Sarah Ann Young
8th Dec 1883	Edward Matchett / Young	s. of Edward Matchett (Miner) & Sarah Ann Young

Osgathorpe Parish Register and Bishop's Transcripts

Marriages 1583 - 1891

St. Mary's Church - Osgathorpe

25th Dec 1837	James Matchett (21 collier) to Sarah Young (22 FWK)
14th Nov 1854	William Griffin (22 Miner) to Louisa Matchett (of full age / servant)
5th Mar 1855	Samuel Jarvis (20 Labourer to Mary Ann Matchett (19 - servant)
23rd Mar 1857	John Matchett (of full age / labourer) to Sarah young (of full age / seamstress)
7th Nov 1863	Edward Matchett (off full age / miner) to Georgina King (18 / seamstress)

Osgathorpe Parish Register and Bishop's Transcripts

Burials 1583 - 1891

Buried in St. Mary's Church graveyard - Osgathorpe

3rd Nov 1784	John Matchett (son of John & Elizabeth
25th May 1786	John Matchett (Poor - son of John & Elizabeth
13th Oct 1786	Rebecca Matchett (Widdow - poor)
14th May 1790	William Matchett (Poor)
14th May 1790	William Matchett (Poor)
23rd Sept 1791	Mary Matchett (A poor widdow)
1st Nov 1796	Rebecca Matchett (daughter of John & Elizabeth)
7th Apr 1807	Mary Matchett (of the parish of Thringstone)
25th June 1852	Hannah Matchett (daughter of William & Elizabeth / infant / Osgathorpe)
22nd Mar 1825	John Matchett (74 / Osgathorpe)
8th Apr 1843	William Matchett (54 / Osgathorpe)
5th Jan 1848	Samuel Matchett (70 / Osgathorpe)
24th Sep 1867	Jacob Matchett (82 / died Ashby Union Workhouse)

15th Dec 1883 Edward Matchett (Infant / 10 weeks / Osgathorpe)
 10th Dec 1884 John Matchett (64 / Breedon)

Double tt spelling at end of Matchett started in 1791

OSGATHORPE CENSUS INFORMATION

1841

SURNAME	C. NAME	REL	AGE	OCC	WHERE BORN
Matchett	William	Head	50 Widdower	Earthenware dealer	Leics
Matchett	Catherine	Daughter	15		Leics
Matchett	Charlotte	Daughter	10		Leics
Matchett	Maria	Daughter	8		Leics
Matchett	Joseph	Son	5		Leics
Matchett	George	Son	4		Leics
Matchett	Samuel	Head	60	Ag Lab	Leics
Matchett	Elizabeth	Daughter ?	40		Leics
Matchett	Francis	Son	12		Leics
Matchett	Louisa	Daughter	10		Leics
Matchett	Mary	Daughter	7		Leics
Matchett	Henry	Son	4		Leics
Matchett	Edward	Son	1m		Leics

1851

Matchett	Elizabeth	Head	50 Widow	Charwoman	Linton, Derbys
Matchett	John	Son	24 UNM	Ag Lab	Linton, Derbys
Matchett	Mary	Daughter	!5	Lady in Waiting	Osgathorpe
Matchett	Edward	Son	10	Errand boy	Osgathorpe
Matchett	Henry		12	Servant boy	Osgathorpe

1861

Matchett	John	Head	36	Ag Lab	Linton Derbys
Matchett	Sarah	Wife	49	Seamstress	Osgathorpe
Matchett	Hannah	Daughter	9		Osgathorpe
Matchett	Samuel	Son	7	Scholar	Osgathorpe
Matchett	Edward	Son	4	Scholar	Osgathorpe
Dexter	Samuel	Head	48	Ag Lab	Osgathorpe
Dexter	Elizabeth	Wife	54	Charwoman	Linton, Derbys
Matchett	Francis	Son in Law	34	Colliery Lab	Osgathorpe
Matchett	Edward	Son in Law	20	Colliery Lab	Osgathorpe

1871

Matchett	John	Head	44	Coal Mine Lab	Linton, Derbys
Matchett	Sarah	Wife	53		Osgathorpe
Young	Hannah	Daughter	20 UNM		Osgathorpe
Matchett	Samuel	Son	18 UNM	Coal Mine Labourer	Osgathorpe
Matchett	Edward	Head	30	Coal Mine Labourer	Osgathorpe
Matchett	Georgiana	Wife	26	Dress maker	Osgathorpe
Matchett	Edward	??	16	General Servant	Osgathorpe

1881

Matchett	Edward	Head	25	Ag Lab	Shepshed
Matchett	Sarah A	Wife	20	Seamstress	Belton
Matchett	Priscilla	Daughter	2		Belton
Matchett	Sarah	Daughter	1		Osgathorpe
Dexter	Samuel	Head	69	Coal labourer	Belton
Dexter	Elizabeth	Wife	78		Linton, Derbys
Matchett	Francis	Son in Law	43 Married	Coal Labourer	Osgathorpe
Griffin	Harriet	G Daughter	19 UNM	Seamstress	Coleorton
Matchett	John	Head	52 Married	Ag Lab	Linton, Derbys
Young	Hannah	Daughter	24 UNM	Seamstress	Osgathorpe
Young	Samuel	Son	22 UNM	Coal Miner	Osgathorpe

1891

Matchett	Sarah	Head	78 Widow		Osgathorpe
Matchett	Samuel	Son	33 UNM	Coal Miner	Osgathorpe
Matchett	Hannah	Daughter	38 UNM	Shirt seamstress	Osgathorpe
Hoult	Sarah	Lodger	80 Widow		Coleorton

1901

Matchett	Samuel	Head	50 UNM	Coal Miner Banksman	Osgathorpe
Matchett	Hannah	Sister	51 UNM		Osgathorpe

1911

Matchett	Samuel	Head	58 UNM	Coal Miner	Osgathorpe
Matchett	Hannah	Head	63 UMN		Osgathorpe

COLEORTON CENSUS INFORMATION

1861

Matchett	Jacob	Head	73	Formerly a collier	Osgathorpe
Matchett	Ann	Wife	72		Newbold
Matchett	Samuel	Head	39	Colliery labourer	Osgathorpe
Matchett	Mary	Wife	41		Swannington
Matchett	Thomas	Son	17 UNM	Colliery Labourer	Coleorton
Matchett	Mary A	Daughter	5	Scholar	Coleorton
Matchett	Albert	Son	5m		Coleorton

1871

Matchett	Samuel	Head	49	Colliery labourer	Osgathorpe
Matchett	Mary	Wife	52		Swannington
Matchett	Mary D	Daughter	16 UNM	Domestic Servant	Coleorton
Matchett	Albert	Son	11	Scholar	Coleorton
Matchett	Henry	Head	33	Blacksmith	Osgathorpe
Matchett	Elizabeth	Wife	33		Swannington
Matchett	Mary	Daughter	8	Scholar	Thringstone
Matchett	Samuel	Son	5m		Coleorton

1881

Matchett	Samuel	Head	58	Colliery labourer	Linton
Matchett	Mary	Wife	60		Swannington
Matchett	Albert	Son	20	Brickyard labourer	Coleorton
Matchett	Mary	Daughter	25 UNM	Seamer of stockings	Coleorton
Matchett	Henry	Head	43	Furnace tinter at foundry ??	Osgathorpe
Matchett	Elizabeth G	Wife	43		Swannington
Matchett	Samuel D	Son	10	Scholar	Coleorton

1891

Matchett	Mary	Wife (Widow)	70		Swannington
Watson	John	Son in Law	21	Colliery lab	Hugglescote
Watson	Mary A	Daughter	34 married		Coleorton
Watson	Matilda E	G. Daughter	11 weeks		Coleorton
Matchett	Henry	Head	53	Iron moulder	Osgathorpe
Matchett	Elizabeth G	Wife	53		Swannington
Matchett	Samuel	Son	20	Footman	Coleorton

1901

Matchett	Henry	Head	63	Iron furnace tester	Osgathorpe
Matchett	Elizabeth	Wife	63		Swannington